

Nooteboom

Nooteboom MCO-50-04V / 25MTR / 2X EXTENDABLE / MEGA / LOWDECK

Year **2010**
Reference number **St_7125**

Common

Type **MCO-50-04V / 25MTR / 2X EXTENDABLE / MEGA / LOWDECK**
Location **Locatie 1**
VIN number **XMRMC0000A0000029**
First registration **28-09-2010**
Fuel **NVT**

Weights

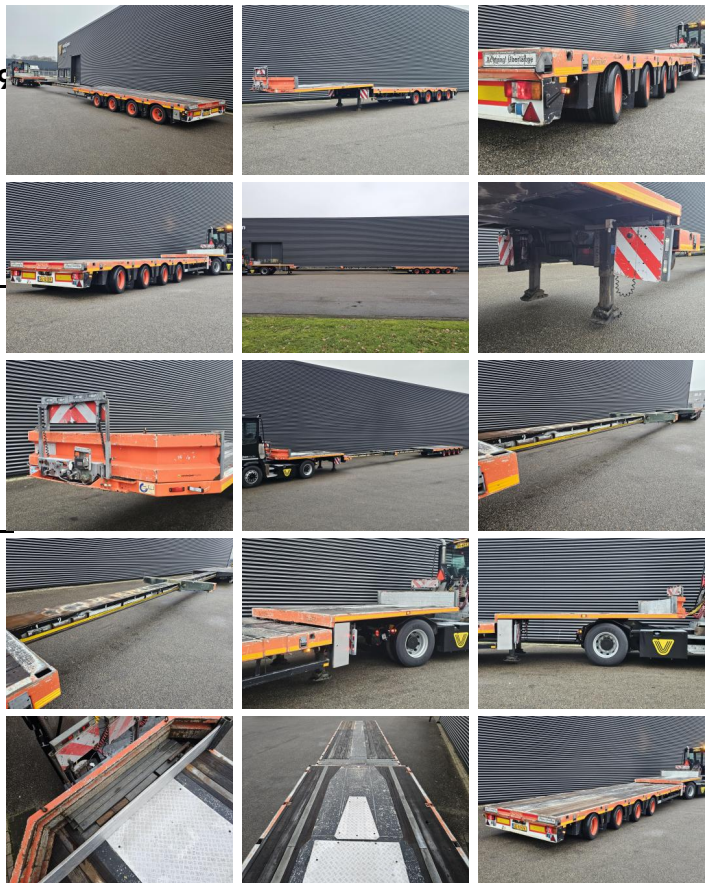
GVW **48400**
Empty weight **14960**
Load capacity **33440**

Specifications

Configuration **4 Assen**
Wheelbase **863**
Superstructure length **903**
Superstructure width **254**
Superstructure height **82**
Total width **254**
Total length **1385**

Tires / suspension

positie_1e_as **rear**
1e_as_aangedreven
1e_as_gestuurd
remmen_1e_as **drum**
Tyre size first axle **205/65R17.5**
Suspension first axle **air**
banden_1e_as_links_buiten **40**
banden_1e_as_rechts_buiten **40**



banden_1e_as_links_binnen	40
banden_1e_as_rechts_binnen	40
Tyres first axle	40
positie_2e_as	rear
2e_as_aangedreven	
2e_as_gestuurd	
remmen_2e_as	drum
Tyre size second axle	205/65R17.5
Suspension second axle	air
banden_2e_as_links_buiten	40
banden_2e_as_rechts_buiten	40
banden_2e_as_links_binnen	40
banden_2e_as_rechts_binnen	40
Tyres second axle	40
positie_3e_as	rear
3e_as_aangedreven	
3e_as_gestuurd	
remmen_3e_as	drum
Tyre size third axle	205/65R17.5
Suspension third axle	air
banden_3e_as_links_buiten	50
banden_3e_as_rechts_buiten	50
banden_3e_as_links_binnen	50
banden_3e_as_rechts_binnen	50
Tyres third axle	50
positie_4e_as	rear
4e_as_aangedreven	
4e_as_gestuurd	
remmen_4e_as	drum
Tyre size fourth axle	205/65R17.5
Suspension fourth axle	air
banden_4e_as_links_buiten	50
banden_4e_as_rechts_buiten	50
banden_4e_as_links_binnen	50
banden_4e_as_rechts_binnen	50
Tyres fourth axle	50

Options

Antiblokkeersysteem