

Nootboom

# Nootboom MCO-48-03V / 2 x EXTENDABLE - 27 mtr / MEGA / LOWDECK

Year **2007**  
Reference number **St\_7127**

## Common

Type **MCO-48-03V / 2 x EXTENDABLE - 27 mtr / MEGA / LOWDECK**  
Location **Locatie 1**  
VIN number **XMRMC000070000813**  
First registration **05-06-2007**  
Fuel **NVT**

## Weights

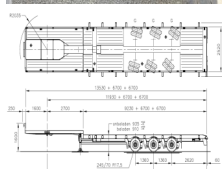
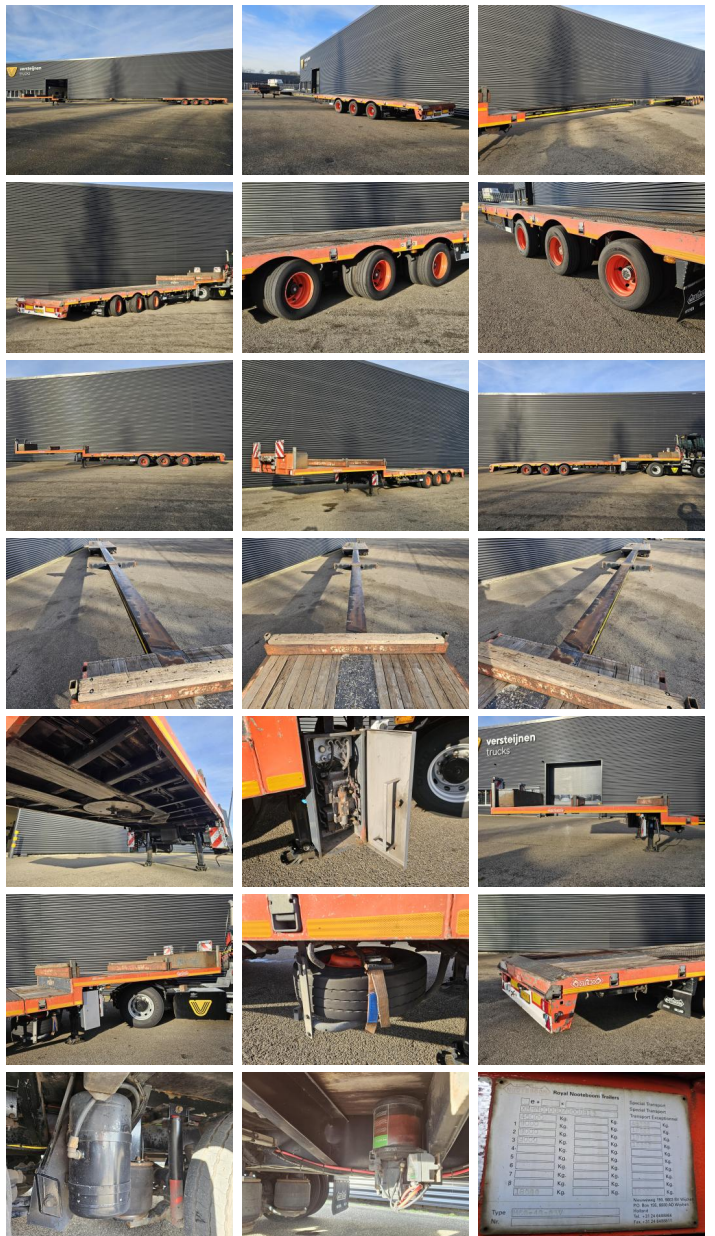
GVW **48000**  
Empty weight **14440**  
Load capacity **33560**

## Specifications

Configuration **3 Assen**  
Wheelbase **795**  
Superstructure length **923**  
Superstructure width **252**  
Superstructure height **91**  
Total height **160**  
Total width **254**  
Total length **1384**

## Tires / suspension

positie\_1e\_as **rear**  
1e\_as\_aangedreven  
1e\_as\_gestuurd  
remmen\_1e\_as **drum**  
Tyre size first axle **245/70R17.5**  
Suspension first axle **air**  
banden\_1e\_as\_links\_buiten **60**



banden_1e_as_rechts_buiten	<b>60</b>
banden_1e_as_links_binnen	<b>60</b>
banden_1e_as_rechts_binnen	<b>60</b>
Tyres first axle	<b>60</b>
positie_2e_as	<b>rear</b>
2e_as_aangedreven	
2e_as_gestuurd	
remmen_2e_as	<b>drum</b>
Tyre size second axle	<b>245/70R17.5</b>
Suspension second axle	<b>air</b>
banden_2e_as_links_buiten	<b>50</b>
banden_2e_as_rechts_buiten	<b>50</b>
banden_2e_as_links_binnen	<b>50</b>
banden_2e_as_rechts_binnen	<b>50</b>
Tyres second axle	<b>50</b>
positie_3e_as	<b>rear</b>
3e_as_aangedreven	
3e_as_gestuurd	
remmen_3e_as	<b>drum</b>
Tyre size third axle	<b>245/70R17.5</b>
Suspension third axle	<b>air</b>
banden_3e_as_links_buiten	<b>45</b>
banden_3e_as_rechts_buiten	<b>45</b>
banden_3e_as_links_binnen	<b>45</b>
banden_3e_as_rechts_binnen	<b>45</b>
Tyres third axle	<b>45</b>

## **Options**

---

Gereedschapskist

Centrale Smering

Antiblokkeersysteem