

Lintrailers

# lintrailers HYDRAULIC RAMP / FORK LIFT - MACHINE TRANSPORT



versteijnen  
trucks

€ 36.500 excl.

Year **2016**  
Reference number **St\_7442**

## Common

Type **HYDRAULIC RAMP / FORK LIFT - MACHINE TRANSPORT**  
Location **Locatie 1**  
VIN number **XL9L1NS3A16231441**  
First registration **12-09-2016**  
Fuel **NVT**

## Weights

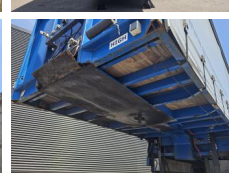
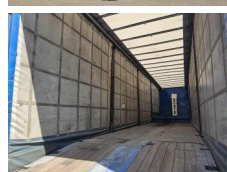
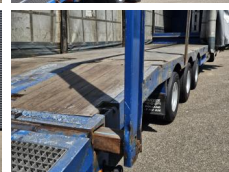
GVW **48000**  
Empty weight **9200**  
Load capacity **38800**

## Specifications

Configuration **3 Assen**  
Wheelbase **950**  
Total width **255**  
Total length **1368**

## Tires / suspension

positie\_1e\_as **rear**  
1e\_as\_aangedreven  
1e\_as\_gestuurd  
remmen\_1e\_as **drum**  
Tyre size first axle **235/75R17.5**  
Suspension first axle **air**  
banden\_1e\_as\_links\_buiten **50**  
banden\_1e\_as\_rechts\_buiten **50**  
banden\_1e\_as\_links\_binnen **50**  
banden\_1e\_as\_rechts\_binnen **50**



Tyres first axle	<b>50</b>
positie_2e_as	<b>rear</b>
2e_as_aangedreven	
2e_as_gestuurd	
remmen_2e_as	<b>drum</b>
Tyre size second axle	<b>235/75R17.5</b>
Suspension second axle	<b>air</b>
banden_2e_as_links_buiten	<b>30</b>
banden_2e_as_rechts_buiten	<b>50</b>
banden_2e_as_links_binnen	<b>30</b>
banden_2e_as_rechts_binnen	<b>50</b>
Tyres second axle	<b>30</b>
positie_3e_as	<b>rear</b>
3e_as_aangedreven	
3e_as_gestuurd	
remmen_3e_as	<b>drum</b>
Tyre size third axle	<b>235/75R17.5</b>
Suspension third axle	<b>air</b>
banden_3e_as_links_buiten	<b>30</b>
banden_3e_as_rechts_buiten	<b>70</b>
banden_3e_as_links_binnen	<b>30</b>
banden_3e_as_rechts_binnen	<b>70</b>
Tyres third axle	<b>30</b>

## Options

---

Antiblokkeersysteem