

Scania

# Scania T143.450 6x4 TORPEDO / HAUBER / HYDRAULIC



Year **1993**  
Reference number **St\_6403**  
Mileage **543,822**

## Common

Type **T143.450 6x4  
TORPEDO / HAUBER /  
HYDRAULIC**  
Location **Locatie 1**  
VIN number **YS2TH6X4Z01192756**  
First registration **14-05-1993**  
Fuel **Diesel**

## Weights

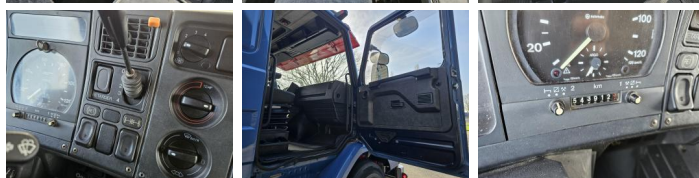
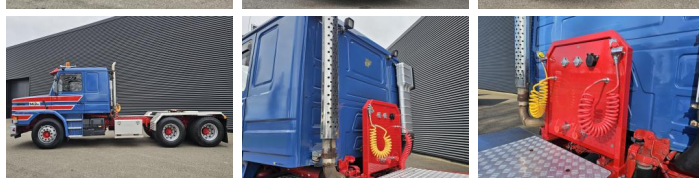
GVW **26000**  
Empty weight **9200**  
Load capacity **16800**

## Specifications

Configuration **6x4**  
Engine **450**  
Wheelbase **420**  
Number of cylinders **8**  
Cylinder capacity **14188**  
Transmission **Handgeschakeld**  
Number of gears **10**

## Tires / suspension

positie\_1e\_as **front**  
1e\_as\_aangedreven  
1e\_as\_gestuurd  
remmen\_1e\_as **drum**  
Tyre size first axle **315/80R22.5**  
Suspension first axle **leaf\_spring**  
banden\_1e\_as\_links\_buiten **50**  
banden\_1e\_as\_rechts\_buiten **50**



banden_1e_as_links_binnen	
banden_1e_as_rechts_binnen	
Tyres first axle	<b>50</b>
positie_2e_as	<b>rear</b>
2e_as_aangedreven	
2e_as_gestuurd	
remmen_2e_as	<b>drum</b>
Tyre size second axle	<b>315/80R22.5</b>
Suspension second axle	<b>leaf_spring</b>
banden_2e_as_links_buiten	<b>50</b>
banden_2e_as_rechts_buiten	<b>50</b>
banden_2e_as_links_binnen	<b>50</b>
banden_2e_as_rechts_binnen	<b>50</b>
Tyres second axle	<b>50</b>
positie_3e_as	<b>rear</b>
3e_as_aangedreven	
3e_as_gestuurd	
remmen_3e_as	<b>drum</b>
Tyre size third axle	<b>315/80R22.5</b>
Suspension third axle	<b>leaf_spring</b>
banden_3e_as_links_buiten	<b>50</b>
banden_3e_as_rechts_buiten	<b>50</b>
banden_3e_as_links_binnen	<b>50</b>
banden_3e_as_rechts_binnen	<b>50</b>
Tyres third axle	<b>50</b>

## Options

---

Kiphydrauliek  
Elektrisch bedienbare  
ramen  
Gereedschapskist  
Sun visor  
Exhaust brake  
PTO