

# Volvo

## Volvo FH 540 6x4 / PALFINGER EPSILON 26 tm



Year **2020**  
Reference number **St\_7392**  
Mileage **250,672**

### Common

Type **FH 540 6x4 /  
PALFINGER EPSILON  
26 tm**  
Location **Locatie 1**  
VIN number **YV2RT60D9LB317715**  
First registration **01-09-2020**  
Fuel **Diesel**

### Weights

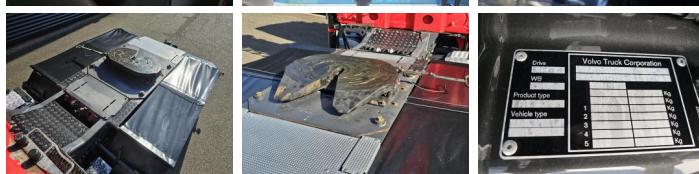
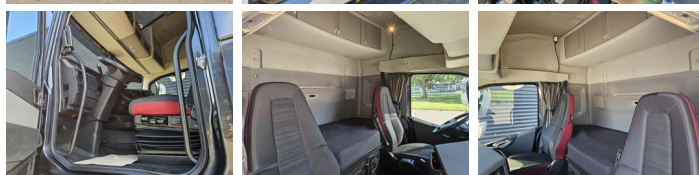
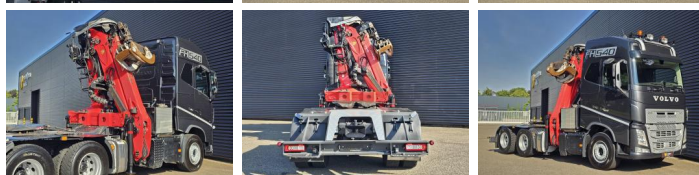
GVW **26000**  
Empty weight **14629**  
Load capacity **11371**

### Specifications

Configuration **6x4**  
European standard **6**  
Engine **5642**  
Wheelbase **390**  
Number of cylinders **6**  
Cylinder capacity **12777**  
Transmission **Automaat**  
Total width **255**  
Total length **810**

### Tires / suspension

positie\_1e\_as **front**  
1e\_as\_aangedreven  
1e\_as\_gestuurd  
remmen\_1e\_as **disk**  
Tyre size first axle **385/65R22.5**  
Suspension first axle **leaf\_spring**



banden_1e_as_links_buiten	<b>60</b>
banden_1e_as_rechts_buiten	<b>60</b>
banden_1e_as_links_binnen	
banden_1e_as_rechts_binnen	
Tyres first axle	<b>60</b>
positie_2e_as	<b>rear</b>
2e_as_aangedreven	
2e_as_gestuurd	
remmen_2e_as	<b>disk</b>
Tyre size second axle	<b>315/80R22.5</b>
Suspension second axle	<b>air</b>
banden_2e_as_links_buiten	<b>40</b>
banden_2e_as_rechts_buiten	<b>40</b>
banden_2e_as_links_binnen	<b>40</b>
banden_2e_as_rechts_binnen	<b>40</b>
Tyres second axle	<b>40</b>
positie_3e_as	<b>front</b>
3e_as_aangedreven	
3e_as_gestuurd	
remmen_3e_as	<b>disk</b>
Tyre size third axle	<b>315/80R22.5</b>
Suspension third axle	<b>air</b>
banden_3e_as_links_buiten	<b>80</b>
banden_3e_as_rechts_buiten	<b>80</b>
banden_3e_as_links_binnen	<b>80</b>
banden_3e_as_rechts_binnen	<b>80</b>
Tyres third axle	<b>80</b>

## **Crane**

---

Crane brand **Palfinger**

## **Options**

---

Actieve rijstrookassistent