

MAN

MAN TGX 33.580 6x4

BL / RETARDER -

120.000 KG

Year **2022**
Reference number **St_7394**
Mileage **141,074**

Common

Type **TGX 33.580 6x4 BL /
RETARDER - 120.000
KG**
Location **Locatie 1**
VIN number **WMA30KZZ6NP182623**
First registration **28-01-2022**
Fuel **Diesel**

Weights

GVW **33000**
Empty weight **9690**
Load capacity **23310**

Specifications

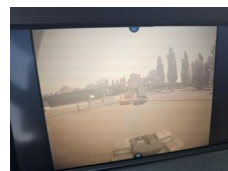
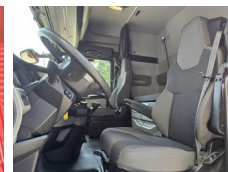
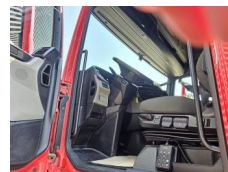
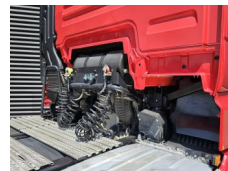
Configuration **6x4**
European standard **6**
Engine **580**
Number of cylinders **6**
Wheelbase **330**
Transmission **Automaat**
Total height **390**
Total width **255**
Total length **710**

Tires / suspension

positie_1e_as **front**
1e_as_aangedreven
1e_as_gestuurd
remmen_1e_as **disk**
Tyre size first axle **385/65R22.5**
Suspension first axle **air**



versteijnen
trucks



banden_1e_as_links_buiten	50
banden_1e_as_rechts_buiten	50
banden_1e_as_links_binnen	
banden_1e_as_rechts_binnen	
Tyres first axle	50
positie_2e_as	rear
2e_as_aangedreven	
2e_as_gestuurd	
remmen_2e_as	disk
Tyre size second axle	315/80R22.5
Suspension second axle	air
banden_2e_as_links_buiten	70
banden_2e_as_rechts_buiten	70
banden_2e_as_links_binnen	70
banden_2e_as_rechts_binnen	70
Tyres second axle	70
positie_3e_as	rear
3e_as_aangedreven	
3e_as_gestuurd	
remmen_3e_as	disk
Tyre size third axle	315/80R22.5
Suspension third axle	air
banden_3e_as_links_buiten	50
banden_3e_as_rechts_buiten	50
banden_3e_as_links_binnen	50
banden_3e_as_rechts_binnen	50
Tyres third axle	50

Options

Luchtvering

Elektrisch bedienbare
ramen

Centrale deurvergrendeling
afstandbediend

Anti-slipregeling

Airconditioning

Actieve rijstrookassistent

Slaapcabine

Elektrische
stuurbevestiging

Differentieelslot

Automatische
versnellingsbak

Antiblokkeersysteem

Adblue systeem

Cruise Control

Sun visor

Exhaust brake

Radio

Heater

Roof spoiler

PTO

Seat heating

Refrigerator

Retarder