

MAN

# MAN TGM 15.240 BL / TIPPER / DOKA / VEEG / SWEEPER

€ 39.750 excl.

Year **2015**  
Reference number **St\_6955**  
Mileage **126,255**

## Common

Type **TGM 15.240 BL /  
TIPPER / DOKA / VEEG  
/ SWEEPER**  
Location **Locatie 1**  
VIN number **WMAN16ZZOFY326188**  
First registration **23-03-2015**  
Fuel **Diesel**

## Weights

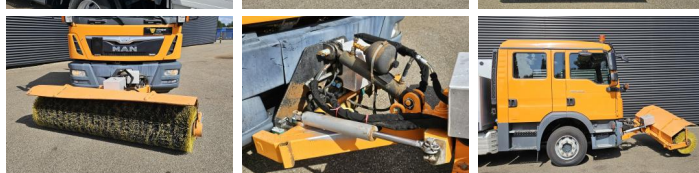
GVW **15500**  
Empty weight **7250**  
Load capacity **8250**

## Specifications

Configuration **4x2**  
European standard **6b**  
Engine **250**  
Number of cylinders **6**  
Wheelbase **412**  
Transmission **Handgeschakeld**  
Cylinder capacity **6871**  
Superstructure length **245**  
Superstructure width **250**  
Superstructure height **118**

## Tires / suspension

positie\_1e\_as **front**  
1e\_as\_aangedreven  
1e\_as\_gestuurd



remmen_1e_as	<b>none</b>
Tyre size first axle	<b>285/70R19.5</b>
Suspension first axle	<b>leaf_spring</b>
banden_1e_as_links_buiten	<b>75</b>
banden_1e_as_rechts_buiten	<b>75</b>
banden_1e_as_links_binnen	
banden_1e_as_rechts_binnen	
Tyres first axle	<b>75</b>
positie_2e_as	<b>rear</b>
2e_as_aangedreven	
2e_as_gestuurd	
remmen_2e_as	<b>none</b>
Tyre size second axle	<b>285/70R19.5</b>
Suspension second axle	<b>air</b>
banden_2e_as_links_buiten	<b>75</b>
banden_2e_as_rechts_buiten	<b>75</b>
banden_2e_as_links_binnen	<b>75</b>
banden_2e_as_rechts_binnen	<b>75</b>
Tyres second axle	<b>75</b>

## Options

---

Elektrisch bedienbare  
ramen

Anti-slipregeling

Airconditioning

Achteruitrijcamera

Gereedschapskist

Differentieelstot

Antiblokkeersysteem

Adblue systeem

Cruise Control

Sun visor

Exhaust brake

Radio

PTO