

# Terberg

## Terberg FM2850-T / PENZ CRANE/KRAN / 10x4

€ 36.900 excl.

Year **2010**  
Reference number **St\_7057**  
Mileage **573,442**

### Common

Type **FM2850-T / PENZ  
CRANE/KRAN / 10x4**  
Location **Locatie 1**  
VIN number **XLWFM2855A2469850**  
First registration **09-03-2010**  
Fuel **Diesel**

### Weights

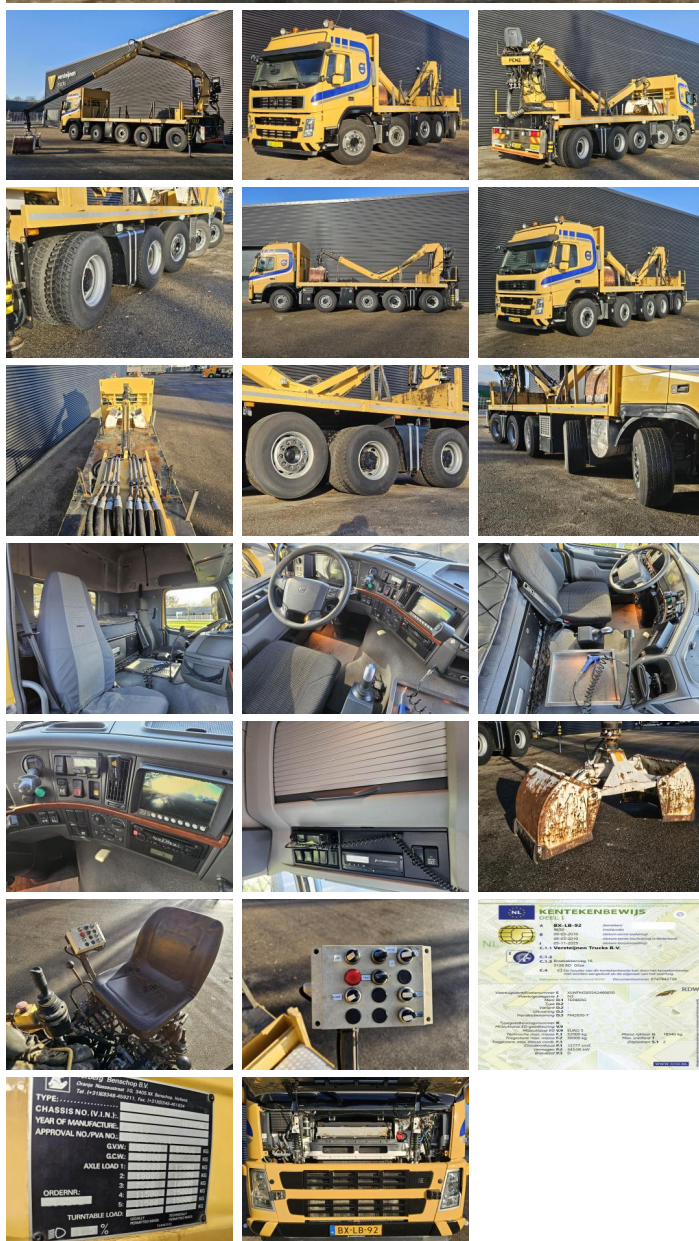
GVW **50000**  
Empty weight **18440**  
Load capacity **31560**

### Specifications

Configuration **10x4**  
European standard **5**  
Engine **460**  
Wheelbase **730**  
Number of cylinders **6**  
Cylinder capacity **12777**  
Transmission **Automaat**  
Superstructure length **642**  
Superstructure width **248**  
Superstructure height **140**  
Total width **255**  
Total length **1025**

### Tires / suspension

positie\_1e\_as **front**  
1e\_as\_aangedreven



1e_as_gestuurd	
remmen_1e_as	<b>disk</b>
Tyre size first axle	<b>425/65R22.5</b>
Suspension first axle	<b>air</b>
banden_1e_as_links_buiten	<b>30</b>
banden_1e_as_rechts_buiten	<b>30</b>
banden_1e_as_links_binnen	
banden_1e_as_rechts_binnen	
Tyres first axle	<b>30</b>
positie_2e_as	<b>front</b>
2e_as_aangedreven	
2e_as_gestuurd	
remmen_2e_as	<b>disk</b>
Tyre size second axle	<b>425/65R22.5</b>
Suspension second axle	<b>air</b>
banden_2e_as_links_buiten	<b>60</b>
banden_2e_as_rechts_buiten	<b>60</b>
banden_2e_as_links_binnen	
banden_2e_as_rechts_binnen	
Tyres second axle	<b>60</b>
positie_3e_as	<b>centre</b>
3e_as_aangedreven	
3e_as_gestuurd	
remmen_3e_as	<b>disk</b>
Tyre size third axle	<b>425/65R22.5</b>
Suspension third axle	<b>air</b>
banden_3e_as_links_buiten	<b>30</b>
banden_3e_as_rechts_buiten	<b>30</b>
banden_3e_as_links_binnen	
banden_3e_as_rechts_binnen	
Tyres third axle	<b>30</b>
positie_4e_as	<b>rear</b>
4e_as_aangedreven	
4e_as_gestuurd	
remmen_4e_as	<b>none</b>
Tyre size fourth axle	<b>13R22.5</b>
Suspension fourth axle	<b>none</b>
banden_4e_as_links_buiten	<b>40</b>
banden_4e_as_rechts_buiten	<b>40</b>
banden_4e_as_links_binnen	<b>40</b>
banden_4e_as_rechts_binnen	<b>40</b>
Tyres fourth axle	<b>40</b>
positie_5e_as	<b>rear</b>
5e_as_aangedreven	
5e_as_gestuurd	
remmen_5e_as	<b>none</b>

Tyre size fifth axle	<b>13R22.5</b>
Suspension fifth axle	<b>air</b>
banden_5e_as_links_buiten	<b>80</b>
banden_5e_as_rechts_buiten	<b>80</b>
banden_5e_as_links_binnen	<b>80</b>
banden_5e_as_rechts_binnen	<b>80</b>
Tyres fifth axle	<b>80</b>

## **Crane**

---

Crane brand	<b>Penz</b>
-------------	-------------

## **Options**

---

Anti-slipregeling  
Airconditioning  
Achteruitrijcamera  
Lift axle  
Gereedschapskist  
Differentieelslot  
Antiblokkeersysteem  
Adblue systeem  
Cruise Control  
Elektrisch bedienbare  
ramen  
Sun visor  
Hub reduction  
Exhaust brake  
Radio  
PTO